

SEAMEN'S
CHURCH INSTITUTE
OF NEW YORK



SEVENTY-FIFTH
ANNUAL REPORT
1919

ANNUAL REPORT

For the Year Ending 1919

PRESENTED AT THE
ADJOURNED ANNUAL MEETING OF THE SOCIETY

Thursday, January 29, 1920

STATIONS OF THE SOCIETY

SOUTH STREET INSTITUTE
CHAPEL OF OUR SAVIOUR

SOCIETY'S ADMINISTRATION OFFICES
25 SOUTH STREET, NEW YORK CITY
Telephone Broad 297

NORTH RIVER STATION
WEST STREET INSTITUTE

CHURCH OF THE HOLY COMFORTER
341 WEST STREET (near Houston)
Telephone, Spring 1623

INSTITUTE TENDER, "J. HOOKER HAMERSLEY"

SUPERINTENDENT
REVEREND ARCHIBALD R. MANSFIELD, D. D.



THE "INS ITUTE"

25 South Street (corner Coenties Slip)

In view of every vessel entering the Harbor. Thirteen stories above the street and three below, of concrete, steel and brick. Ground, building and equipment cost \$1,225,000. Titanic Memorial Lighthouse Tower and Time Ball, erected by popular subscription. Flag Pole and Flags presented by Lafayette Post No. 140, G. A. R. Top floor, Navigation and Marine Engineering School, Clinic, Meredyth Whitehouse Memorial, gift of Mr. and Mrs. Francis M. Whitehouse.

Annual Report of the Board of Managers JANUARY, 1920

In spite of its spacious building and approximately its 240 workers, the seventy-fifth year of the SEAMEN'S CHURCH INSTITUTE OF NEW YORK found it unable to meet by a large margin the exceedingly practical work in this Port, it was organized to perform. Such a condition means that each of the departments has functioned beyond the normal limit of its capacity—for a legitimate request by a seaman for the kind of service the Institute holds itself out to give is hard to deny.

What is the nature of the service the Institute has continued to render sailors during the past year? It has, between voyages, welcomed them to a clean, attractive club house; it has received their wages for safe keeping or transmission to their dependents, and has cared for their dunnage; it has handled their mail and has helped their friends and relatives to locate them; it has found them employment; with its game and reading rooms and its entertainments it has afforded them recreation; it has transported them and their dunnage between ship and shore; it has conducted a store where they could buy their outfits and be sure they were getting good quality at an honest price; it has conducted a Navigation and Marine Engineering School; and finally it has tactfully and persistently endeavored, with its staff of chaplains and workers, to recall the sailor to his better nature, to stimulate his religious instincts irrespective of creed, to assist him with practical counsel, to visit him in sickness and in many cases give him financial help by loan or gift.

The successful operation of all of these activities and the keen appreciation shown by our patrons, the seamen, have stimulated and encouraged the development of similar projects in many other ports, until the influence of the Institute has become world wide. There has been the heartiest cooperation with other great institutions of a similar character in this Port, and throughout the world.

A short summary of the work of each department with statistics follows, but the full human and humane aspect can scarcely be caught from these pages. Two items are deeply significant.

During the past year there has been received from sailors for safe keeping \$930,744.41 consisting of over 6,000 deposits. We now have beds for 714 seamen but not beds for all who come. The house is generally booked before noon. This means 260,610 lodgings a year. Contrast this with the old time vile boarding house and the circle of harpies who preyed upon the sailor's wages and who encouraged his peculiar temptations, and we must feel that surely this is Christ's work.

INSTITUTE BUILDING.

The fabric of this great modern hotel is in charge of a competent superintendent and engineer. Consider that it is always crowded, the

mere keeping of the building clean is a large undertaking. Operation of engines, boilers, elevators, generators and refrigerating plant has been economically successful. Almost all repairs are made by the engineer and his staff. The building is in good condition.

HOTEL AND RESTAURANT.

The accommodations have been increased so that now we have 714 beds. As the house is practically always full we are now registering about 260,610 lodgings a year.

The demands on the *hotel desk* are numerous and varied and include receiving valuables of all kinds for safe keeping, and the answering of all kinds of questions.

The handling of the enormous amount of mail has now been segregated from the hotel desk and has been made an entirely separate department. 746 call boxes have been installed. Approximately 110,595 pieces of first class mail, including that at the North River Station, have been received for Institute guests. This department is of inestimable benefit to the men and their families, and the amount of responsibility and detail is of course great.

The *Baggage Department* has rendered a tremendous service. During the year we have checked in 69,727 pieces, and have checked out 82,360 pieces.

The patronage of the Restaurant and Soda Fountain has increased greatly. Approximately 582,000 meals were served during the year and there have been 363,076 sales at the Soda Fountain, an increase of nearly 20,000. With the present space and equipment it is impossible to supply the real demand and need in these departments.

SEAMEN'S WAGES DEPARTMENT.

In the year 1902 the various stations of the Society reported that they had received \$54,000 for safe keeping. During the past year there has been deposited \$930,744.41, over 6,000 deposits having been made. More than \$250,000 of this amount was received at the hotel desk after the Savings Department was closed.

RELIGIOUS AND SOCIAL DEPARTMENT.

This department is headed by the Director of Religious Work who at all times has a staff of at least twelve. The endeavor has been made to reorganize the work so as to completely meet the social and religious needs of the men in the Institute building. Systematic attention, however, has been given so far as possible to the hospital and harbor work, and the North River Station has received constant attention in regard to Sunday evening services and the weekly concerts.

In carrying out this work it is felt that perhaps the greatest efficiency has been achieved in the work at the *Chaplain's Office*. This office has been open from 9:00 A. M. to 6:00 P. M., with one or more of the staff

always in attendance to give advice and meet all the personal difficulties which men might bring. The number of men coming for assistance to the Chaplain's Office has averaged from 40 to 75 daily. This feature has given to the work a certain stability and sense of security, which was quite lacking when there was no center to which all appeals might be referred. It has brought all of the staff into touch with the whole constituency of the house, has tended to prevent duplication, and has brought about an understanding of the whole situation by every member of the staff.

The *relief work* has chiefly been conducted with the idea of impressing the men with the importance of paying back what they have received. A careful record is kept of all cases so that it is possible to determine whether a man has been helped before and whether he has returned the money advanced. At the same time, actual cases of destitution are taken care of. Special mention should be made of the relief work during the strike when many sailors became destitute. The Institute firmly adhered to the policy of not taking sides, and at the same time endeavored to provide entertainment for the increased number of idle men, and in cases of emergency supplied them with meal tickets, all of which work was ardently appreciated.

The *Loan Fund* has been administered for the purpose of taking care of cases not properly under the administration of the Relief Fund; that is, cases where men had money that was not available for immediate use.

The *Lost and Found Department* has been successfully administered.

Through the very character of the sailor's employment he is often lost to his relative and friends. A *Department of Missing Men* has been established and an inquiry bulletin is issued weekly and sent to hundreds of institutes, missions, union halls, marine hospitals, consulates and shipping commissioners. From September 29 to December 31, 176 men were inquired for and 93 were found through this Department.

The *Libraries* have been carefully maintained and an abundance of good and suitable reading matter is always available.

Medical Relief is afforded, either by prescription or by referring the applicant to some hospital clinic. A clinic is maintained at the Institute daily from 12:00 noon to 1:30. The physician in charge has prepared and given a lecture with slides and movies for the special consideration of men which is of peculiar value. The number of cases handled is running from 15 to 25 daily. A regular course of eight medical lectures is given in the Navigation School.

Recreation in the form of motion pictures and concerts is regularly supplied; on Monday and Wednesday evenings movies are regularly run, and on Friday evenings a concert is given. The attendance at the movies has averaged since October 1st, 425; and at the concerts, 550.

In the *Religious Work* the policy of one language has been adopted, chiefly in the interest of unity in the house. On Sunday evenings the attendance at the services runs from 150 to 200, the Chapels generally being full. In connection with the Sunday evening services the *Home Hour* has furnished balancing social atmosphere. On Tuesday evening,

Gospel meetings are held with a good and responsive attendance. The organized work of the Chaplain's office is supplemented by constant and painstaking visiting among the men in the library and reading rooms by all the Chaplains. In this way many individual cases are reached which never would come to the Chaplain's Office.

In April, the *United States Marine Hospital* at Stapleton, Staten Island, and later the Hospital for Seamen on Ellis Island were put directly under the care of the Institute, and since that time a Chaplain has been constantly in attendance, visiting all the wards practically every day.

It was noted in our last Report that Superintendent Mansfield was appointed, by the Secretary of the Treasury, Chaplain in the United States Public Health Service for duty at the Marine Hospital, New York, the first appointment of this kind ever made.

WAYS AND MEANS.

The Institute can continue to grow in usefulness only through increases in the number of its friends. The contributions from new friends in every part of the world are exceedingly gratifying, and the Board of Managers thinks they indicate a realization of the service which the Institute renders. The Department is in charge of an extremely competent Director.

THE "LOOKOUT."

This is our official publication and is the main channel through which the character of our work is given publicity, and through which our appeals are met. Through "The Lookout," with its stories of happenings at the Institute, humorous, pathetic and often tragic, the sailor becomes a very real person to his unknown friends.

OTHER DEPARTMENTS.

The *Supply Store* or "slop chest" has continued to do a good business. No changes in equipment have been made. We are carrying a stock valued at over \$15,000, and maintain a tailor shop and laundry.

The *Printing Department* may be said to be still in an experimental stage, but it is believed will fully justify its maintenance in the future.

In the *Shipping and Employment Department* fewer men have passed through our hands than in the year 1918. The decrease in the usefulness of this department is partly due to the unsettled conditions in the shipping world and to various other reasons not within the control of the Institute.

The *harbor boat* "J. Hooker Hamersley" has been out of commission since October, as the result of an accident by fire, and earlier in the year was out of commission, so that her showing is not as good as last year. She has, however, made 304 trips, transported 167 men, visited 894 vessels in the Harbor and transported 317 pieces of dunnage. She has made 36 cruises for the Navigation School, having on board each time an average of fourteen students.

NORTH RIVER STATION.

It is felt that this Station is doing the most it can with inadequate room and equipment. Religious services have been held with a total attendance of 3,675 seamen. Over 5,000 pieces of mail have been received and 1,183 pieces of dunnage checked. 97 entertainments have been given, with an approximate attendance of nearly 6,000. Some necessary improvements have been made, such as installing electric lights in Church and Rectory.

This station of the Institute is not able to meet the real needs of the work on West Street, and a modern plant is a real necessity.

NAVIGATION AND MARINE ENGINEERING SCHOOL.

The Total enrollment for the year was 1,490 students, 700 of whom were examined and passed by the local inspector. Of the 790 others, 412 were men of the Navy; 210 Shipping Board men, and 168 took a private course. This is a much better showing than in 1918. It is felt that the school is admirably conducted.

NEW CEMETERY PLOT.

This plot in Cedar Grove Cemetery, Flushing, Long Island, New York, which was referred to in the last Annual Report was purchased in October 1918 at a cost of \$4,320. It contains approximately 6,000 square feet and in it 864 bodies may be interred.

An exceedingly beautiful but plain monument of white marble has been erected, the gift of Mr. Allison V. Armour, one of our Lay Vice-Presidents, on the face of which is a magnificent solid bronze reproduction of the Seal of the Society.

Mr. Armour has planned to have trees planted on the back and side lines of the plot nearly surrounding it with an evergreen hedge.

LEGACIES.

The following bequests and gift were made to the Society in the year 1919.

Gerard Beekman	\$15,000
Albert E. Beh	50
Fanny Bridgham	20,000
Mary R. Butler	250
Mary Elizabeth Cummings	5,000
to be paid at the death of surviving relatives.	
Christiana Shoosmith	1,500
<hr/>	
British-American War Relief Fund	2,000

A special fund, the income to be used to relieve distressed British Seamen and the principal to be used to endow a dormitory when the proposed Institute Annex is built.

NATIONAL ORGANIZATION.

The SEAMEN'S CHURCH INSTITUTE OF AMERICA referred to in the last Annual Report has made very great progress under the leadership of the Organizing Secretary, the Reverend George W. Davenport.

The Organization will soon be incorporated under the Laws of the State of New York.

Among the interesting sidelights of the General Convention of the Protestant Episcopal Church held in Detroit, Michigan, in October was the Exhibit of the SEAMEN'S CHURCH INSTITUTE OF AMERICA, the object of which was to show how the Institutes have met the needs of seamen in the ports in which they are situated, and to show that the other seaports and lakeports need similar places.

Our New York Society's large and comprehensive educational exhibit greatly attracted the attention of the three thousand visitors.

OBITUARY.

During the past year the Society suffered the loss of two of its number:

Right Reverend David Hummell Greer, D.D., LL.D., Bishop of the Diocese of New York, and Honorary President of this Society. He was elected a Clerical Vice-President of the Society in 1889, which office he still held, when in 1908 he was elected President, having become Bishop of New York, and he became Honorary President in 1913.

Bishop Greer was broad minded, tolerant, Catholic in the truest sense, the highest type of Christian.

His personal interest in the work, his progressive spirit, his unflinching courage and optimism, his helpfulness and his wise counsels materially aided in bringing success to the projects of the Institute, during the critical years of its growth.

We cherish his memory and feel that in spirit he is still with us.

Baron Astor of Hever, an Honorary Member of the Society since 1897 at which time he established the William Waldorf Astor Trust Fund by a gift of \$50,000 the income to be applied to the support of the Missionaries of the Society. His interest in the Institute and his generosity have been and will continue to be long remembered with much gratitude.

In closing this summary the *Board of Managers* desires to record its deep and warm appreciation of the long and ever increasingly efficient work of the **Superintendent**.

He and his staff have continued to meet the many problems which such an undertaking presents, with an untiring spirit of complete service. To him and them we are indebted for our confidence that this great work is worthy of any appeal we may make.

GENERAL SUMMARY OF WORK

ALL STATIONS AND DEPARTMENTS, JANUARY 1, 1919, TO DECEMBER 31, 1919.
Submitted by the REV. ARCHIBALD R. MANSFIELD, D.D., Superintendent.

SEAMEN'S WAGES DEPARTMENT.

Number of Deposits	6,026	Amount of Deposits	\$930,744.41
Number of Transmissions ..	1,136	Amount of Transmissions ..	\$163,648.75
Home Countries of Depositors	24	Cities and Countries to which money has been sent	175

SHIPPING DEPARTMENT.

Men signed and shipped....	2,867	Total number of men provided with employment....	3,377
Men provided with temporary employment, ship or other	510	Number of vessels to which crews have been furnished	383

BOAT AND HARBOR SERVICE, TENDER "J. HOOKER HAMERSLEY."

Trips made	304	Men transported	167
Vessels Visited	894	Dunnage transported	317

Boat out of commission 3 months due to fire.

RESTAURANT, HOTEL, POST OFFICE, DUNNAGE, SLOP CHEST AND TAILOR DEPARTMENTS.

Meals served	581,880	Lodgings registered	248,481
No. of Sales at Soda Fountain	363,076	Pieces of mail received for Seamen	110,595
Sales at Slop Chest, Tailor Shop, and Laundry Customers	31,202	Pieces of dunnage checked..	70,910

RELIGIOUS AND SOCIAL DEPARTMENT

Religious Services	313	Communion Services (Public and Private)	63
Attendance	20,034	Entertainments	219
Home or Friendly Hour, Sunday Evenings	51	Attendance	63,139
Attendance	7,281	Comfort Bags and Knitted articles distributed	3,639
Bible Classes	44	Christmas gifts distributed to	1,740
Attendance	2,937	Packages reading matter distributed	4,096
Baptisms	13	Visits to Vessels	1,056
Marriages	8		
Funerals	49		

EDUCATIONAL DEPARTMENT.

First Aid Lectures	2	Examined and passed by Local Inspectors	700
Attendance	390	School Certificates issued to	140
Board of Education Public School Lectures	18	Daily average attendance at School	55
Attendance	3,228		
Students enrolled in Navigation & Marine Eng. School	1,490		

RELIEF DEPARTMENT.

Aided from Relief Funds....	2,766	Treated in Institute Clinic, (Nov. 11, to Dec. 31, 1919)	986
Sent to Legal Aid Society and other Organizations..	33	Assisted through Institute Loan Fund	154
Visits to Hospitals	689		
Visits to Patients	31,943		
Sent to Hospitals and Dispensaries	406		

TREASURER'S ANNUAL STATEMENT

January 1, 1919, to December 31, 1919.

INCOME.

Revenue from Outside Sources:	
Subscriptions and Donations ..	\$98,779.87
Church Offerings ..	3,873.67
Collections on Ships ..	1,335.65
Net Income from Invested Funds ..	8,344.56
	<hr/>
	\$112,333.75

Revenue from Institute Activities:

Hotel (including Lodgings, Barber Shop, Wash Room, Post-Office), Baggage Room, Restaurant, Soda-Fountain, Slop Chest, Shipping and Printing Departments; Navigation and Marine Engineering School ..	377,616.65
North River Station ..	162.35
Rent, British Consulate General Shipping Branch ..	1,872.00
Miscellaneous ..	2,945.13
	<hr/>
	\$494,929.88

EXPENDITURES

Institute Building, 25 South Street:	
Religious and Social Work ..	31,767.71
Salaries of Superintendent and Staff, Wages of Employees in all other Departments; also supplies for Hotel, Restaurant, Engine Room, Slop Chest, Printing Department, Navigation and Marine Engineering School, etc. ..	441,004.68
Institute Boat "J. Hooker Hamersley" and Shipping Department, Salaries and Expenses ..	10,546.19
"The Lookout": Salaries, Printing and Postage ..	6,450.73
Repairs and Replacement Fund ..	7,000.00
North River Station: Salaries, Expenses, Repairs ..	9,221.76
	<hr/>
Deficit ..	\$ 11,061.19

FRANK T. WARBURTON, *Treasurer.*

Cemetery Plot and Burial Fund

Used for burial of destitute seamen and upkeep of burial plots.

January 1, 1919: Deficit (As adjusted) ..	\$2,180.42
Receipts, (Gifts and Miscellaneous Income) ..	1,692.24
	<hr/>
Payments, (Burial Expenses and Upkeep) ..	\$488.18
	825.47
	<hr/>
December 31, 1919: Deficit ..	\$1,313.65

Roxy M. Smith Fund

Income during year, (Used for Annual Memorial Entertainment) ..	\$ 104.45
---	-----------

Morrill, Morgan & Bourne Fund

December 31, 1919, Excess expended for Relief, (Encroachment on General Funds) ..	\$2,038.46
---	------------

FRANK T. WARBURTON, *Treasurer.*

COMMITTEE ON TRUST FUNDS

SUMMARY

ASSETS

Railroad Securities, etc.	\$ 99,042.88	
Bonds and Mortgages	59,250.00	
Real Estate: 52 Market Street	\$ 7,000.00	
Front Street property	57,104.34	64,104.34
Cash on deposit: Emigrant Industrial Savings Bank	250.00	
N. Y. Life Insurance & Trust Co.	5,114.89	5,364.89
		<u>\$227,762.11</u>

PERMANENT FUND: Income to be applied to the general uses of the Society.

Balance, last report	\$108,424.64	
Legacy, Mary R. Butler	\$ 250.00	
Margaret E. Zimmerman	5,000.00	
Elizabeth P. Kirby	1,000.00	
Francis Norman	1,000.00	7,250.00
		<u>\$115,674.64</u>

WILLIAM WALDORF ASTOR TRUST FUND: Income to be applied first to the support of Missionary at East River Station, and afterwards to the maintenance of any missionaries employed by the Society

50,819.00

CHARLES E. RHINELANDER FUND: In memory of his wife, Matilda F. Rhinelander. Income to be applied to the general uses of the Society

25,000.00

Funds For Special Purposes

DAVENPORT FUND: Income to be applied to the purchase of books for distribution among seamen	2,000.00
MORRILL FOUNDATION: In memoriam of the late Captain Charles Montgomery Morrill. Income to be applied exclusively to the relief of destitute mariners and those dependent upon them who may have been left destitute by their death while following the sea	17,831.25
HOSIER MORGAN FUND: Income to be used in common with that of the Morrill Foundation Fund	1,735.27
EMILY H. BOURNE FUND: Income to be used in common with that of the Morrill Foundation Fund	5,000.00
SEAMEN'S RELIEF FUND: Income to be used in common with that of the Morrill Foundation Fund	751.95
"C. A. R." MEMORIAL FUND: Income to be used for some needy object	500.00
ROXY M. SMITH FUND: In memory of her husband, W. V. R. Smith. Income to be applied to giving annually an entertainment for seamen on the birthday of W. V. R. Smith, August 2nd	2,000.00
CAPT. WILLIAM WILSON OWEN MEMORIAL FUND: Income to be applied to the use of destitute sailors under the care of the Institute	250.00
CHAPEL FLOWER FUND: Income to be used for flowers for the altar of the Chapel	550.00
RAMAGE ENDOWMENT: Income to be used for the maintenance of dependent seamen	3,000.00
BRITISH AMERICAN WAR RELIEF FUND: Income to be used to relieve distressed British seamen	2,000.00
650.00	
ANNEX BUILDING FUND: To endow rooms in Annex when built	
	<u>\$227,762.11</u>

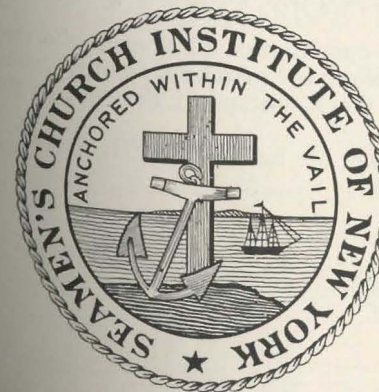
INCOME.

Received from railroad securities, etc.	\$4,190.58
Received from mortgages	3,564.17
Received from Emigrant Industrial Savings Bank	15.30
Received from New York Life Insurance & Trust Co.	181.83
	<u>\$7,951.88</u>

Distributed as follows:

Permanent Fund	Paid Treasurer	\$2,702.12	
Astor Fund	" "	2,310.77	
Rhinelanders Fund	" "	1,105.34	
Davenport Fund	" "	104.45	6,222.68
Morrill Foundation Fund	" "	900.33	
Morgan Fund	" "	89.86	
Bourne Fund	" "	247.50	
Seamen's Relief Fund	" "	24.32	
"C. A. R." Memorial Fund	" "	15.00	
Capt. Owen Fund	" "	15.15	
Ramage Endowment Fund	" "	181.02	1,473.18
Roxy M. Smith Fund	" "	104.45	
Chapel Flower Fund	" "	14.05	118.50
Astor Fund, transferred to Sinking Fund		58.50	
New York Life Insurance & Trust Co., commissions		79.02	137.52
			<u>\$7,951.88</u>

Dated, New York, January 21st, 1920



JOHN A. MCKIM,
ROBT. L. HARRISON,
ORME WILSON, JR.
Committee on Trust Funds.

Securities examined and found
to agree with the foregoing
account.

CHAS. W. BOWRING,
C. E. BRAINE,
Auditing Committee.

Nineteenth Annual Report

OF THE

Seamen's Benefit Society

In 1900 the only organization of women connected with the Seamen's Church Institute was formed. It is known as the Seamen's Benefit Society, a name that is surrounded by pleasant memories for many boys who have visited the Institute.

Sunday would be a lonely day for many apprentice lads, boys from fourteen to twenty years of age, were it not for the Sunday evening supper in the Apprentice room at which they are always welcome. These boys are taking their training in the British Merchant Service preparatory to becoming mates, engineers, and captains, and in their welfare the society has taken special interest.

"The Apprentice Room" one of the most artistic rooms in the Institute, is their gift, and the almost constant use made of it, bears testimony to the need, for such a place.

The Thursday evening parties that are supported by this organization are talked of in every port in the world. They are looked forward to as one of the pleasures of New York. A ship that sails on Thursday is likely to have aboard some disappointed lad who hoped it wouldn't sail until Friday. He wanted to attend one more party at the Institute.

But this Society does not confine its work to the apprentice boys. It sends large supplies of reading matter; it sews for the Institute, and this year sent a large number of towels made by the Lenten Sewing Class, for use by the seamen. It also sent flowers for the Chapel of Our Saviour.

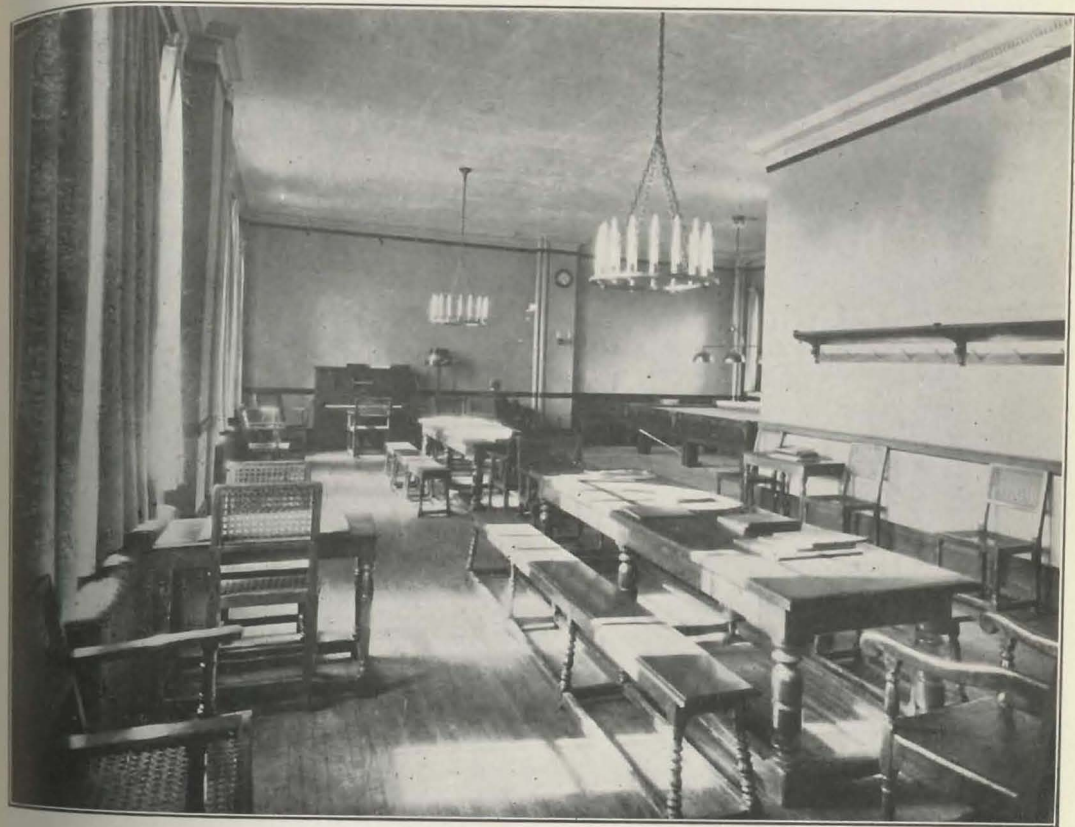
Special treats usually come from this organization, such as tickets for the theatre; or money for picnics and automobile trips.

This year the organization undertook the responsibility of visiting the sailors in Long Island College Hospital. They visited regularly and brought to the attention of the Chaplain in the Institute any cases that required special attention. They also provided Christmas gifts for all the seamen in that hospital.

The Society is glad to have the co-operation of all women who realize the tremendous importance of the work for merchant seamen; whose imagination enables them to visualize the handicaps of the men in this calling.

AUGUSTA M. DE PEYSTER, *Secretary*.

December, 1919.



Apprentice Boys' Room. Given by the Seamen's Benefit Society.

SEAMEN'S BENEFIT SOCIETY

IN ACCOUNT WITH HELEN VAN C. LUNG, TREASURER

DECEMBER 1, 1918 TO DECEMBER 1, 1919.

<i>Receipts.</i>	<i>No Expenditures</i>
Balance, as per last report . . . \$	369.83
Proceeds of Opera through Miss Leverich	535.62
Proceeds Sewing Class through Miss de Peyster	115.95
Dues	366.00
Interest	6.68
Balance	\$1,394.08

Seamen's Benefit Society

Officers

MISS CATHARINE S. LEVERICH, *President* MRS. GEORGE A. LUNG, *Treasurer*
 MISS AUGUSTA M. DE PEYSTER, *Secretary*.

Active Members

MRS. WALTER P. ANDERTON	MISS MARGARET D. LEVERICH
MISS JOSEPHINE L. BEEKMAN	MRS. VERNON S. MANN
MISS FRANCES C. DE PEYSTER	MRS. HOWARD T. MARTIN
MISS ISABEL M. GREGORY	MRS. FRANK B. PORTER, JR.
MRS. RYDER HENRY	MRS. JOSEPH FERRIS SIMMONS
MRS. SAMUEL N. HINCKLEY	MRS. HENRY C. SWORDS
MISS EDITH VAN C. JAY	MISS EMILY B. VAN AMRINGE
MISS MARY WAGSTAFF	

Associate Members

MISS LOUISA H. BARNARD	MRS. WILLIAM G. LOW
MRS. EDMUND L. BAYLIES	MRS. LEA MCI. LUQUEE
MRS. EDWARD N. BREITUNG	MRS. MEYERKORT
MRS. J. J. BLODGETT	MRS. ABERCROMBIE MILLER
MR. ALEXANDER JAY BRUEN	MRS. HENRY LEWIS MORRIS
MISS EMILY BUCH	MRS. NEWBOLD MORRIS
MRS. ANDREW CARNEGIE	MRS. J. I. MOUNT
MRS. GEORGE L. CHENEY	MRS. EDWARD P. MEANY
MISS ANNIE CLARKSON	MRS. WILLIAM A. NETTLETON
MRS. ARTHUR COPPELL	MISS EMILY NORRIE
MRS. B. FARQUHAR CURTIS	MRS. ALFRED DUANE PELL
MRS. JAMES MAY DUANE	MRS. ALBERT E. PUTMAN
MISS KATHARINE DU BOIS	MRS. WILLIAM M. PURDY
MRS. JOHN R. DELAFIELD	MRS. FRANKLIN D. ROOSEVELT
MRS. HAMILTON FISH	MRS. JAMES R. ROOSEVELT
MRS. ANSON R. FLOWER	MRS. W. EMLEN ROOSEVELT
MRS. ELBERT H. GARY	MRS. HERBERT L. SATTERLEE
MRS. ANSON W. HARD, JR.	MISS DOROTHY SCHIEFFELIN
MRS. ROBERT HOE	MRS. MORTON L. SCHWARTZ
MRS. FREDERICK T. HOPPIN	MRS. HENRY F. SHOEMAKER
MISS SARAH L. HORN	MRS. EDWARD B. SEXTON
MRS. E. DE P. HOSMER	MRS. EDWARD SPARROW
MRS. FRANK LONDON HUMPHREYS	MRS. CHARLES FEARING SWAN
MISS MARGARET A. JACKSON	MISS ELIZABETH M. VAN WINKLE
MISS LUCY H. KEAN	MRS. JAMES B. VAN WOERT
MRS. RUTHERFORD KEARNEY	MRS. PATRICK A. VALENTINE
MISS CORNELIA KIRBY	MISS JULIA CHESTER WELLS
MISS EDITH KING	MRS. LAWRENCE WELLS
MRS. WOODBURY G. LANGDON	MISS EDITH WETMORE
MRS. JOSEPH T. LOW	MISS CAROLINE WHITE
MRS. SETH LOW	MISS MAY W. WHITE
MISS ETHEL ZABRISKIE	

Honorary Members

H. GLOSTER ARMSTRONG, H.B.M., Consul General of Great Britain
 STEIN BARVE, Consul General, The Netherlands
 ROMOLO TRITONJ, Consul General, Italy
 C. RAVN, Consul General, Norway
 RT. REV. CHARLES S. BURCH, D.D., L.H.D., LL.D.



TITANIC MEMORIAL LIGHTHOUSE TOWER

Time Ball drops daily, exact noon. Green Light burns nightly. Three Cooper Hewitt Quartz lamps each 2,500 candle power.

Form of Bequest

Those who contemplate making provision for the INSTITUTE in their WILLS may find the following form convenient:

I give and bequeath to the "SEAMEN'S CHURCH INSTITUTE OF NEW YORK," a corporation incorporated under the Laws of the State of New York, the sum of _____ Dollars to be used by it for its corporate purposes.