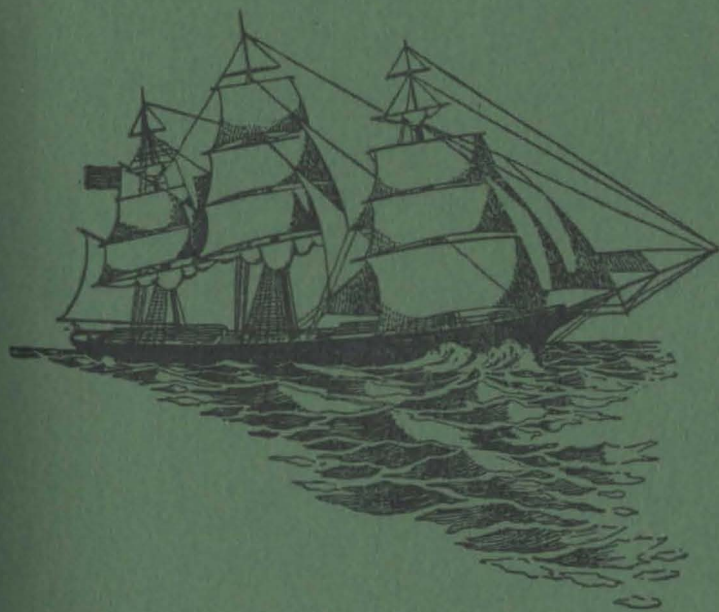


SEAMEN'S
CHURCH INSTITUTE
OF NEW YORK



SEVENTY-SEVENTH
ANNUAL REPORT

1921

ANNUAL REPORT

of the

Seamen's Church Institute of New York

For the Year 1921

PRESENTED AT THE
ADJOURNED ANNUAL MEETING OF THE SOCIETY

Tuesday, January 31, 1922

STATIONS OF THE SOCIETY

SOUTH STREET INSTITUTE

SOCIETY'S ADMINISTRATION OFFICES
25 SOUTH STREET, NEW YORK CITY

Telephone Bowling Green 3620

CHAPEL OF OUR SAVIOUR

NORTH RIVER STATION

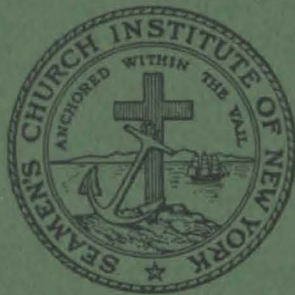
(Temporarily Closed)

CHURCH OF THE HOLY COMFORTER

(Temporarily Closed)

341 West Street (near Houston)

Telephone Spring 1623





THE "INSTITUTE"

25 South Street (corner Coenties Slip)

In view of every vessel entering the Harbor. Thirteen stories above the street and three below, of concrete, steel and brick. Ground, building and equipment cost \$1,225,000. Titanic Memorial Lighthouse Tower and Time Ball, erected by popular subscription. Flag Pole and Flags presented by Lafayette Post No. 140, G. A. R. Top Floor, Navigation and Marine Engineering School, Clinic, Meredyth Whitehouse Memorial, gift of Mr. and Mrs. Francis M. Whitehouse.

Officers and Managers of the Society

Chosen at the adjourned *Annual Meeting*, January 31st, 1922.

Honorary President

RT. REV. WILLIAM T. MANNING, D.D., D.C.L., 1908

President

EDMUND L. BAYLIES, 1885

Clerical Vice-Presidents

RT. REV. FREDERICK BURGESS, D.D., 1906	REV. ERNEST M. STIRES, D.D., 1902
RT. REV. EDWIN S. LINES, D.D., 1908	REV. WILLIAM TUFTS CROCKER, 1903
VERY REV. HOWARD C. ROBBINS, D.D., 1918	REV. C. F. J. WRIGLEY, D.D., 1909
REV. HENRY LUBECK, LL.D., D.C.L., 1889	REV. CHARLES L. SLATTERY, D.D., 1910
REV. S. DE L. TOWNSEND, D.D., 1900	REV. FRANK WARFIELD CROWDER, D.D., 1916
REV. CALEB R. STETSON, D.D., 1922	

Lay Vice-Presidents

JOHN H. MORRISON,	1877	JOHN A. MCKIM,	1889
LISPENARD STEWART,	1883	ALLISON V. ARMOUR,	1917
ROBERT L. HARRISON,	1901		

Secretary and Treasurer

FRANK T. WARBURTON, 46 Cedar Street, 1888

Lay Managers

B. T. VAN NOSTRAND,	1887	SIR T. ASHLEY SPARKS,	1912
AUGUSTUS N. HAND,	1902	MARINUS W. DOMINICK,	1912
HERBERT L. SATTERLEE,	1902	JOHN S. ROGERS,	1913
EDWIN A. S. BROWN,	1904	LEROY KING,	1913
CHARLES A. CLARK,	1905	LOUIS GORDON HAMERSLEY,	1913
CLINTON E. BRAINE,	1905	CHARLES E. DUNLAP,	1915
BENJAMIN R. C. LOW,	1905	GEORGE W. BURLEIGH,	1915
HENRY L. HOBART,	1907	EDWIN DE T. BECHTEL,	1915
FRANKLIN D. ROOSEVELT,	1908	BERNON S. PRENTICE,	1915
AYMAR JOHNSON,	1908	JAMES BARBER,	1916
ERNEST E. WHEELER,	1908	JOHN J. RIKER,	1916
ROBERT MCC. MARSH,	1908	F. KINGSBURY CURTIS,	1920
CHARLES W. BOWRING,	1909	EDWARD J. BARBER,	1920
ORME WILSON, JR.,	1910	FRANK C. MUNSON,	1920
FRANKLIN REMINGTON,	1911	JUNIUS S. MORGAN, JR.,	1920
J. FREDERIC TAMS,	1911	WALTER WOOD PARSONS,	1921
BAYARD C. HOPPIN,	1911	HARRY FORSYTH,	1921
OLIVER ISELIN,	1912	FRANKLIN W. ROBINSON,	1921
VINCENT ASTOR,	1912	HENRY DEARBORN,	1922

Honorary Members

CLAYTON PLATT,	1891	FRANCIS M. WHITEHOUSE,	1917
----------------	------	------------------------	------

Superintendent

REV. ARCHIBALD R. MANSFIELD, D.D., 1895

Note: Dates refer to year of election.

Committees of the Board of Managers

North River Station

(Temporarily Closed)

EDWIN A. S. BROWN, Chairman, 1 Newark Street, Hoboken, N. J.
 GEORGE W. BURLEIGH HENRY L. HOBART ROBERT McC MARSH

South Street Institute and Sub-Committees

EDMUND L. BAYLIES, Chairman, 54 Wall Street

ALLISON V. ARMOUR, Vice-Chairman

VINCENT ASTOR	AUGUSTUS N. HAND	FRANK C. MUNSON
JAMES BARBER	ROBERT L. HARRISON	FRANKLIN REMINGTON
EDWIN DET BECHTEL	HENRY L. HOBART	FRANKLIN W. ROBINSON
CHARLES W. BOWRING	OLIVER ISELIN	JOHN S. ROGERS
GEORGE W. BURLEIGH	AYMAR JOHNSON	SIR T. ASHLEY SPARKS
EDWIN A. S. BROWN	LEROY KING	J. FREDERIC TAMS
REV. WM. TUFTS CROCKER	BENJAMIN R. C. LOW	B. T. VAN NOSTRAND
HENRY DEARBORN	JOHN A. MCKIM	ERNEST E. WHEELER
MARINUS W. DOMINICK	JUNIUS S. MORGAN, JR.	REV. C. F. J. WRIGLEY, D.D.
CHARLES E. DUNLAP		

Committee on the Hotel

EDMUND L. BAYLIES, Chairman, 54 Wall Street

ALLISON V. ARMOUR	AUGUSTUS N. HAND	ERNEST E. WHEELER
VINCENT ASTOR	FRANKLIN REMINGTON	
CHARLES E. DUNLAP	B. T. VAN NOSTRAND	

Committee on Social Work and Entertainment

BENJAMIN R. C. LOW, Chairman, 30 Broad Street

CHARLES E. DUNLAP	AYMAR JOHNSON	LEROY KING
OLIVER ISELIN	FRANKLIN W. ROBINSON	

Committee on Religious Work

HENRY L. HOBART, Chairman, 120 Front Street

EDWIN A. S. BROWN	REV. WM. TUFTS CROCKER	BENJAMIN R. C. LOW
CHARLES A. CLARK	ROBERT L. HARRISON	REV. C. F. J. WRIGLEY, D.D.

Committee on Educational Work, Library, etc.

ALLISON V. ARMOUR, Chairman, 375 Park Avenue

EDWIN DET. BECHTEL	J. FREDERIC TAMS, Vice Chairman, 52 Pine Street	
FRANK C. MUNSON	MARINUS W. DOMINICK	LOUIS GORDON HAMERSLEY
	FRANKLIN D. ROOSEVELT	FRANKLIN W. ROBINSON

Committee on Shipping and Seamen's Savings

CHARLES E. DUNLAP, Chairman, 1 Broadway

JAMES BARBER	WALTER WOOD PARSONS	SIR T. ASHLEY SPARKS
FRANK C. MUNSON	J. FREDERIC TAMS	HENRY DEARBORN
EDWARD J. BARBER	CHARLES W. BOWRING	

Committee on Boat and Harbor Service

J. FREDERIC TAMS, Chairman, 52 Pine Street

LOUIS GORDON HAMERSLEY	AYMAR JOHNSON	FRANKLIN REMINGTON
OLIVER ISELIN	LEROY KING	

Legislation

ERNEST E. WHEELER, Chairman, 60 Wall Street

EDMUND L. BAYLIES	EDWIN DET. BECHTEL	JOHN S. ROGERS
-------------------	--------------------	----------------

Ways and Means

BAYARD C. HOPPIN, Chairman, 120 Broadway

CHARLES W. BOWRING	JOHN S. ROGERS, Vice-Chairman, 27 Cedar Street	
HENRY DEARBORN	LOUIS GORDON HAMERSLEY	WALTER WOOD PARSONS
HARRY FORSYTH	ROBERT L. HARRISON	FRANK T. WARBURTON
	JOHN A. MCKIM	ERNEST E. WHEELER

Trust Funds

JOHN A. MCKIM, Chairman, 6 East 74th Street

ROBERT L. HARRISON	JUNIUS S. MORGAN, JR.	HARRY FORSYTH
--------------------	-----------------------	---------------

Committee on "The Lookout"

EDMUND L. BAYLIES	EDWIN DET. BECHTEL	HENRY L. HOBART
-------------------	--------------------	-----------------

Attorneys for the Society

CARTER, LEDYARD & MILBURN, 54 Wall Street

ANNUAL REPORT

of the

BOARD OF MANAGERS

January, 1922

The enterprise of the SEAMEN'S CHURCH INSTITUTE OF NEW YORK has, from the beginning, been single-hearted and straightforward in aim. One great purpose has given it force and direction—to advance the Kingdom of God on earth, by making the practical gospel of Christ known and operative among seamen of every race and creed in the Port of New York.

The *seventy-seventh* year of its existence has been in many respects extremely difficult for those carrying its burdens. The needs of seamen, both for material and other help, have been greater and more keenly appealing. At the same time, we have been confronted with diminishing returns from those departments which hitherto have shown a profit, or have been self-sustaining. In common with similar institutions, we have faced a serious falling-off in contributions. Some curtailment became necessary. Although the year has been hard, the rewards and satisfactions have been compensating.

The greatest port in the world cannot do less than continue generously to maintain this service of hospitality for those who contribute so essentially to its commerce and who could not by any effort of their own provide themselves with such a home ashore.

What, in a few words, does the INSTITUTE do? It furnishes, at a moderate price, lodging, food, care of dunnage and other services such as are adjuncts of a hotel. In addition, and this represents the margin of cost over income, it affords the comfort of game and reading rooms, maintains a medical clinic, a loan department, and furnishes entertainment and social and religious service of many kinds; it receives the sailors' money for safekeeping or transmission to his relatives; it handles his mail; and most important of all, it maintains a staff of tactful men and women to whom Jack ashore comes with about every kind of puzzlement to which humans seek solution. Such are the normal functions of the INSTITUTE. During the past year there has been added the duty of helping to relieve the widespread and unusual distress.

Because the ships have been idle, care for the UNEMPLOYED has been the great burden of the year. Early last fall, want stalked, a grim



The entrance to the 39th Street Ferry House, referred to in the Managers' Report, which was used from November to April, as a Welfare Headquarters for Stranded, Unemployed Merchant Seamen.



One of two large Waiting Rooms in the 39th Street Ferry House, which were converted into open Dormitories, and in which 45,433 free lodgings were provided from November 7, 1921, to April 15, 1922. (See Managers' Report.)

menace through our building. Early in the year, an investigation of the whole situation was begun, and when it was discovered that there were upwards of 5,000 seamen destitute in the Borough of Manhattan it was evident that the INSTITUTE could not handle the problem alone. An effort had been made by Superintendent Mansfield to find some suitable building near the INSTITUTE which could be converted into an emergency shelter for the winter. His appeal and the proposition submitted to the Municipal and Naval authorities resulted in securing the use of the 39th Street Ferry House on South Street near South Ferry, in which to care for stranded, unemployed, merchant seamen. Superintendent Mansfield was appointed a member of the City Committees on Unemployment and on Housing and Relief, which gave to him a position of influence, and enabled him to obtain the much needed relief.

With the generous and hearty co-operation of the City Department of Plant and Structures, of the U. S. Navy, especially its Bureau of Supplies and Accounts, and the National Headquarters, the Atlantic Division, and the Richmond County Chapter of the American Red Cross, the Wanamaker Store, and of many interested persons, the building and the equipment were quickly made available.

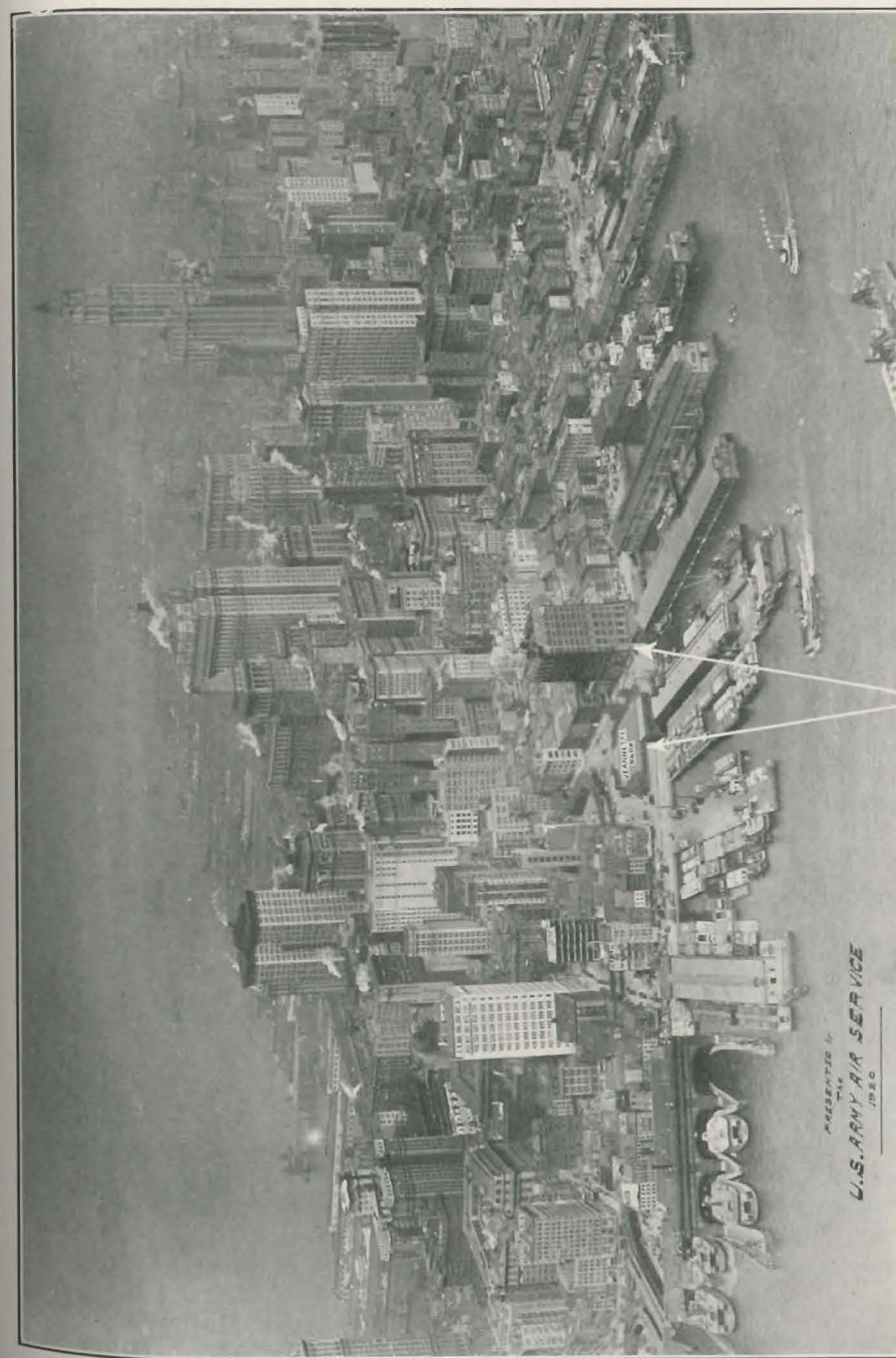
This shelter was opened on November 7th, 1921, and closed on April 15th, 1922. During that period of time 45,433 sleeping accommodations were provided and 85,552 meals were served. The number of seamen cared for was 4,165, representing 48 nationalities.

In connection with this relief work it is interesting and gratifying to note that this is the first time so far as we know, that merchant seamen, as a class, have been recognized by the Municipality, also that although the work was placed under the direction of the INSTITUTE, the City generously financed the whole undertaking.

We are glad of this opportunity to express our gratitude to the Honorable Bird S. Coler, Commissioner of the Department of Public Welfare, and to Major Edward Underwood of the Salvation Army, without whose valuable co-operation and assistance it would not have been possible to achieve such splendid results.

Our need for a LARGER BUILDING may be judged from the fact that with this Emergency Welfare Headquarters a few steps from us, and filled to capacity, 810 men paid for lodging in the INSTITUTE every night, and many were turned away.

In co-operation with the City, JEANETTE PARK (directly opposite the INSTITUTE BUILDING) was reconstructed, with a collar of grass and shrubs and trees around a cement center, where the men enjoy many games both winter and summer. At one end, the INSTITUTE erected a platform, on which it is hoped the MEMORIAL STAGE to MERCHANT



SEAMEN who served in the Great War, will be built. To one side, the INSTITUTE has put up a tent, that in the summer is very gay with the fluttering flags of the INSTITUTE, the City, and the Stars and Stripes; and it proves a welcome shade to the men, who are always to be found under it.

The INSTITUTE now needs its friends as never before. We have confidence that the short summary of the work of each department, which follows, will indicate that our service is essential, practical, and economically administered. Two items indicate the volume of work done: 264,711 lodgings have been furnished, and \$744,869.34 received for safekeeping or transmission.

INSTITUTE BUILDING

The mechanical equipment and structure of the INSTITUTE BUILDING are under the care of a competent engineer. Every square foot of its sixteen floors is in use. Most of the repairs are done by the engineer and his staff. Operation of engines, boilers, elevators, laundry and refrigerating plant, has been economically successful.

HOTEL AND RESTAURANT

The clerks at the *hotel desk* have had to refuse, for lack of room, approximately 50,000 applicants for lodging. They have registered 264,711. From the desk nearly 12,000 bath tickets have been sold, and over \$5,000 in value of meal tickets distributed. They have handled, for safe keeping, 434 envelopes containing valuables, and over \$150,900 has been received from 1,306 seamen, the amount being afterwards transferred to the Wages Department. During the hours when the baggage room was closed, they have handled 539 pieces of dunnage. With the ever present telephone problem and the answering of questions, the desk is indeed a busy place.

The charge for lodgings is from 25c to \$1.00.

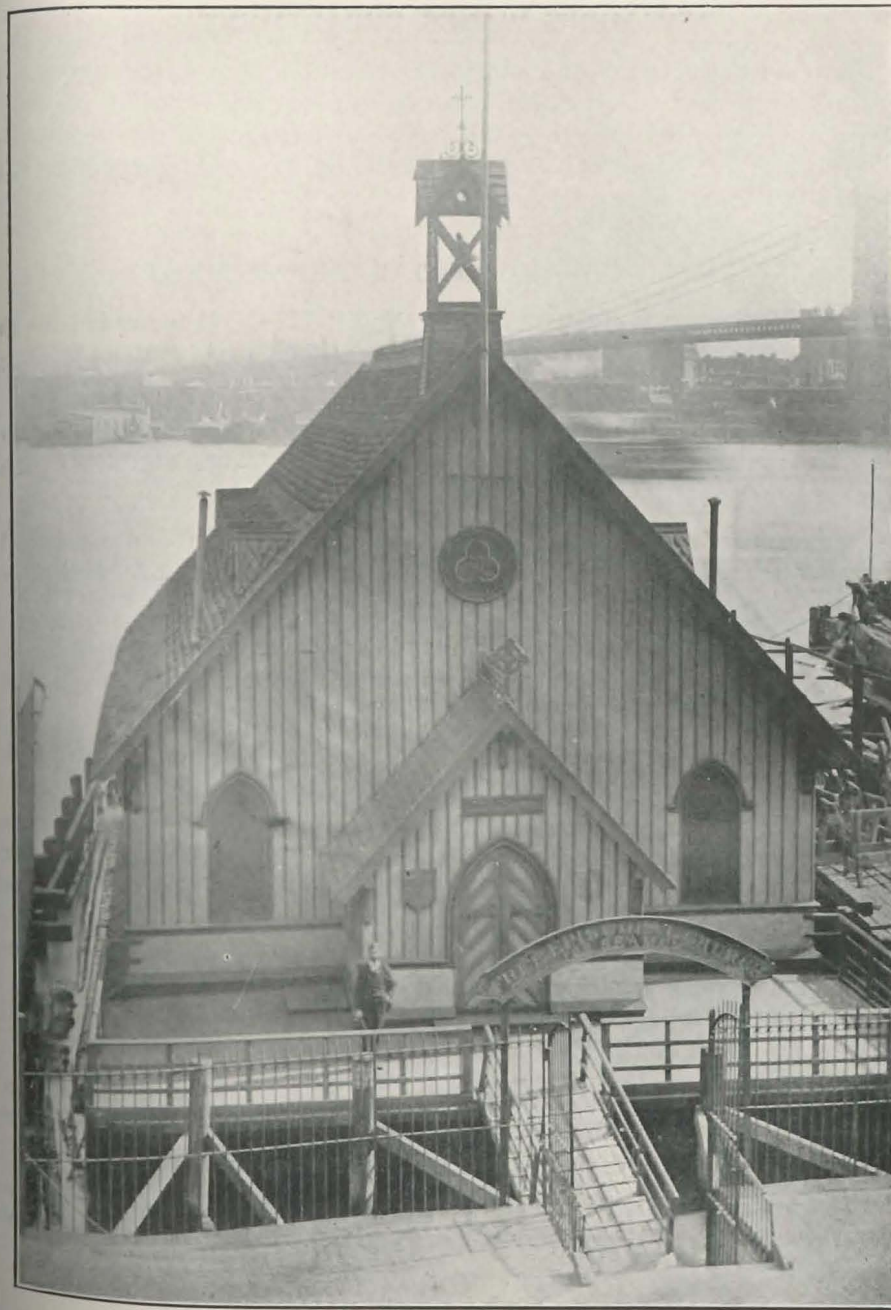
The *Baggage Department* has received 47,532 incoming pieces of dunnage and has handled an average of 585 pieces IN and OUT every day—nearly 214,000 during the year.

The *Lunch Counter* sales approximated \$134,000. The Restaurant Department has operated the food service at the Welfare Headquarters at the 39th Street Ferry House.

The *Soda Fountain*, owing to lack of money in the sailors' pockets, has necessarily shown a falling off in receipts. It has been in use daily from 7 A. M. to 11 P. M.

We are operating a large *Stock Room* for supplies ordinarily used by more than one department, and which may be bought in large quantities, thereby accomplishing a considerable saving.

The *Post Office Department* has received over 198,344 pieces of mail.



The second Floating Church of Our Saviour as it appeared at the foot of Pike Street, East River, in 1895 when Superintendent Mansfield took charge and began his work as a Chaplain of the Society. This church was built in 1869 and was moored in the same position as that of our first floating church of the same name in 1843.

SEAMEN'S WAGES DEPARTMENT

A significant decrease of about forty per cent, due to unemployment, is shown in this department. The total deposits were \$744,869.34, of which \$167,456.39 was transmitted to the families or friends of the depositors. The number of deposits was 5,036, made by seamen representing 930 localities in 66 countries.

RELIGIOUS AND SOCIAL DEPARTMENT

This department is the heart of the INSTITUTE. It is headed by the director of religious work, who, through the year, has had an average staff of eight.

Services are held in the Chapel of Our Saviour on Sunday morning and evening. At the evening service, the Chapel is generally well filled. The Sunday afternoon Bible Classes have been well attended.

The *Chaplain's Office* is the clearing house for all religious and social work. Here the *Relief Work* and *Loan Fund* are administered, and a *Medical Clinic* conducted.

It has been necessary to give less attention to providing *entertainments*, for reasons of economy, both in money and time. An average of two a week have been given.

The *Libraries* and *Reading Rooms* are in charge of a member of this department.

This department has had to meet as best it could, the pressing and immediate needs of destitute seamen, out of a job through no fault of their own. On January 20th the reading room was opened for men to sleep on the floor (admission tickets were issued to those having seamen's passports), and between that date and April 27th, 10,036 men were so lodged. Through the relief books, about 4,000 men have been assisted.

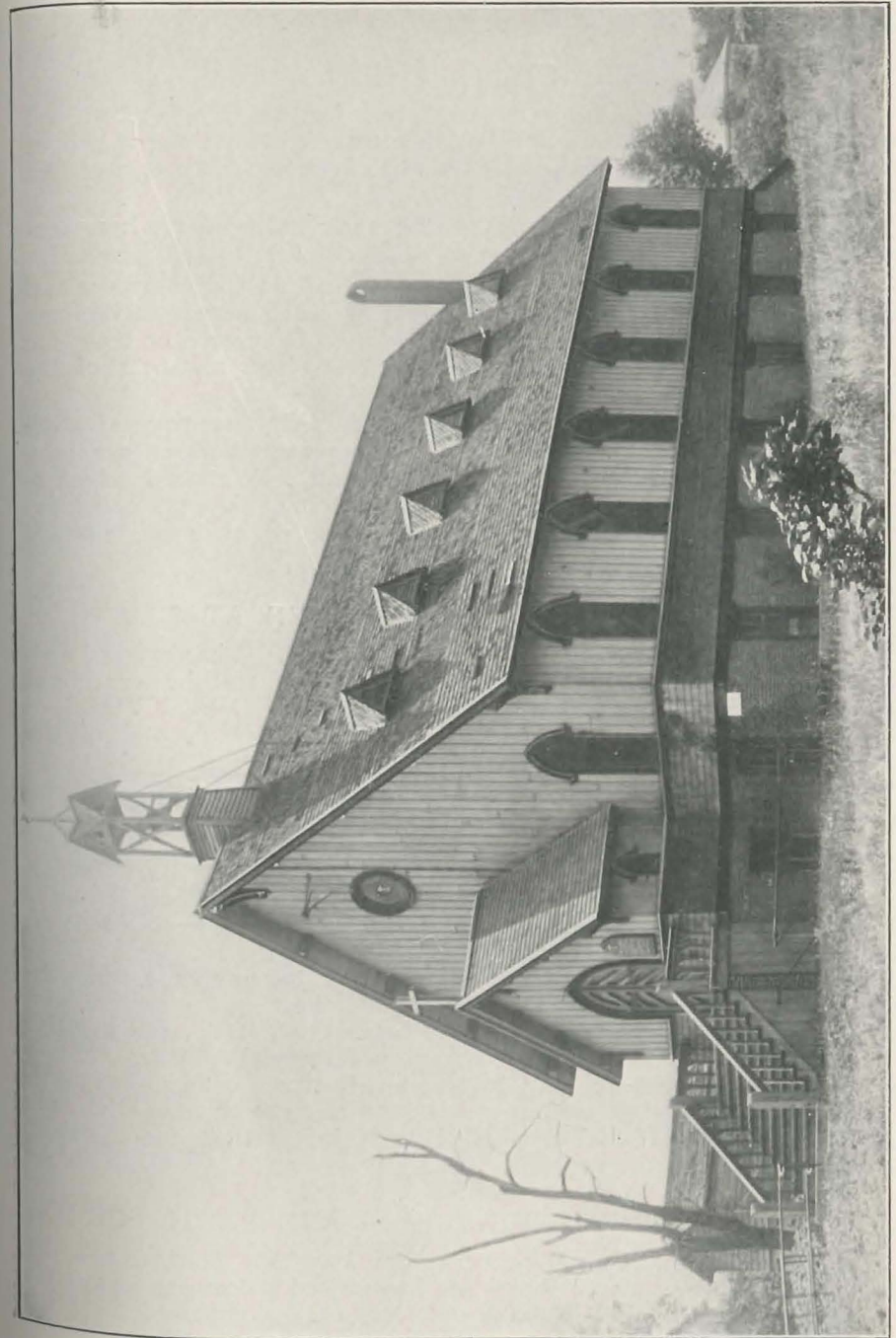
ACCOUNTING AND WAYS AND MEANS

A comprehensive and accurate system of accounting is maintained. During the past year this department has been reorganized, with a view to securing complete economy and efficiency of administration.

The burden of raising the annual budget rests upon the Committee on WAYS and MEANS. If the work is to go on, old friends must help, and new be found.

THE "LOOKOUT"

Our publication has been useful during this hard year, as a vehicle for special appeals of various kinds. It is read all over the world, and by its



The Second Floating Church of Our Saviour, built in 1869 and moored at Pike Street, East River; presented to the Archdeaconry of Richmond 1910. Towed to Mariners' Harbor, Staten Island, January 6, 1911, where on the shores of the Kill von Kull it is known as All Saints' Parish Church.

accounts of happenings at the INSTITUTE—humorous, pathetic, and often tragic—makes the sailor a real person to his unknown friends.

OTHER DEPARTMENTS

The *Laundry* has had its record year, for we have washed and cleaned over 1,162,500 pieces of linen, blankets, etc. Making a proper allowance for power, light and water, this has been done at a cost of less than one cent a piece.

The *Slop Chest* or clothing store, *Tailor* and *Barber Shops*, have continued to operate, but with a decrease of business owing to hard times.

The *Shipping Department* (Employment Bureau) was temporarily closed at the end of the year. This was due to shipping conditions in general, over which the INSTITUTE had no control. *Employment*, however, on both land and sea has been provided as a relief measure by representatives of the Religious and Social Department.

The *Apprentices' Room* has shown an average daily attendance of about twenty-five boys. These potential ships' officers are visitors at our port, and the hospitality here shown is keenly appreciated. We are indebted to a loyal group of women who are hostesses at the entertainments and meetings here held, and to the Seamen's Benefit Society, which largely finances this department (See report on page 22).

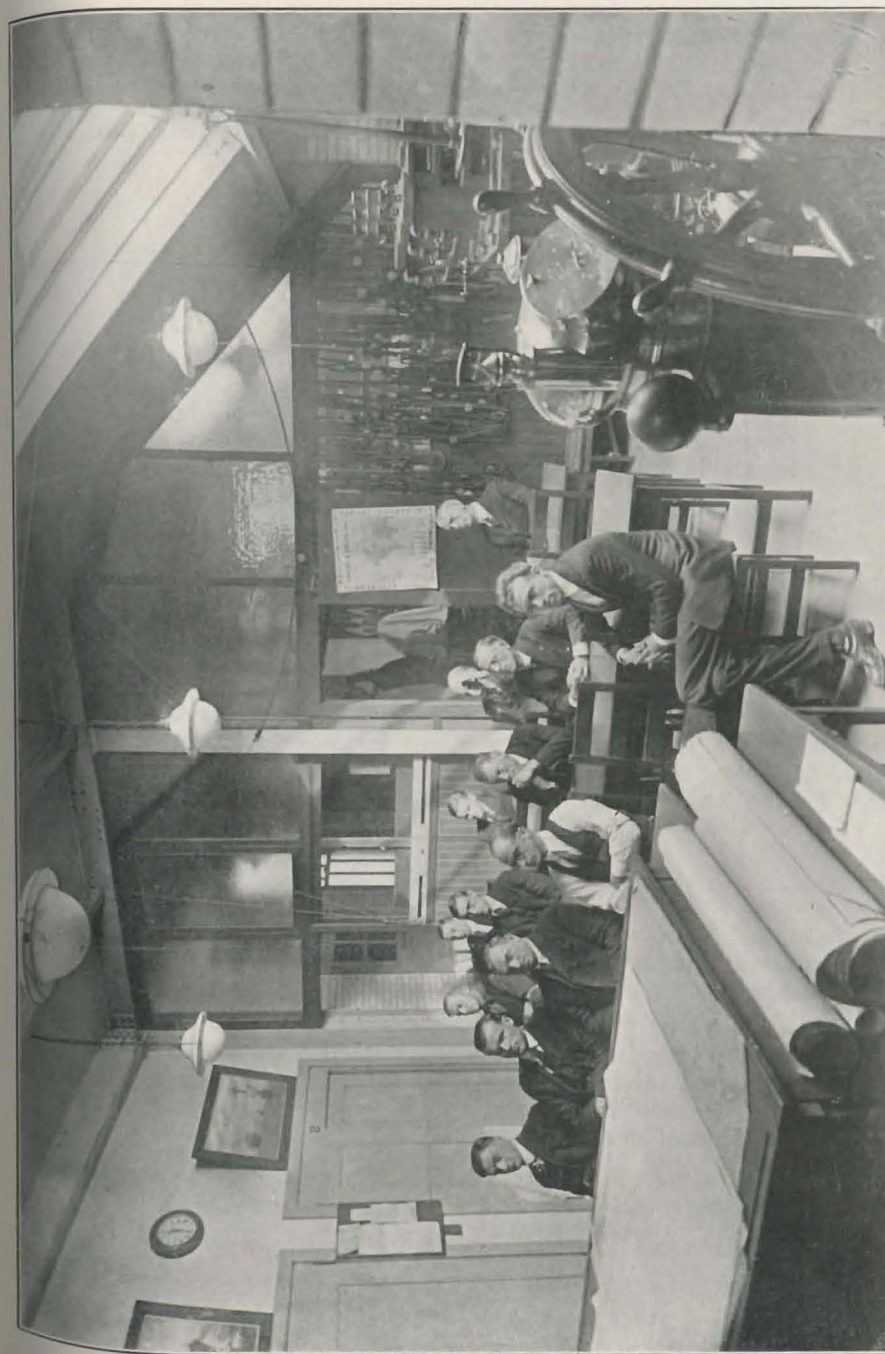
RADIO MEDICAL ADVICE FOR MEN AT SEA

This is an outstanding accomplishment of the year. It has entailed endless correspondence, a number of trips to Washington, and the securing of the co-operation of the BOARD OF SUPERVISING INSPECTORS, of the UNITED STATES PUBLIC HEALTH SERVICE, and of the RADIO CORPORATION OF AMERICA.

The SEAMEN'S CHURCH INSTITUTE, from its small radio station "KDKF," demonstrated so convincingly the value of medical advice by wireless for men on ships not carrying a doctor, that it has revolutionized the treatment of seamen in this respect—the BOARD OF SUPERVISING INSPECTORS has amended the rules making a course in FIRST AID essential, before granting an original license to a master, mate, pilot or engineer. THE UNITED STATES PUBLIC HEALTH SERVICE in conjunction with the INSTITUTE has prepared and published a First Aid Manual for this course, and the supplies for the ship medicine chest have been brought up to date. And, lastly, the RADIO CORPORATION OF AMERICA has grasped the vision of service, and five of their powerful coastal stations give precedence to all calls for medical advice from ships at sea and, in co-operation with the UNITED STATES PUBLIC HEALTH SERVICE HOSPITALS, now get and send back the healing messages.

NAVIGATION, MARINE ENGINEERING AND RADIO SCHOOL

The lessened demand for officers in the Merchant Marine, and the lack of money for educational purposes, has caused a decrease in attendance. However, 309 students have enrolled, 212 have passed local inspectors' examinations, and 10 have been granted school certificates.



Small lecture room of the
NAVIGATION, MARINE ENGINEERING AND RADIO SCHOOL
where the RADIO MEDICAL SERVICE was
visualized and planned.

NORTH RIVER STATION

Prevailing conditions along the water front have rendered the operation of this station difficult. The more important statistics show 5,865 letters received for seamen, 945 pieces of dunnage checked, 9,185 attended entertainments, and 7,603 were present at Sunday and weekly services.

This station was temporarily closed on December 31, 1921, but, it is earnestly hoped, may again soon be reopened.

LEGACIES

Friends who have recently died have bequeathed to us the following legacies:

Mary B. Dortic	\$25,000.00
Elizabeth Southmayd	25,000.00
Eliza U. Ely, of Meriden, Conn., a legacy appraised value of which was.....	173.57
(the estate being insufficient to pay the legacy in full.)	

In closing, the Board of Managers desire to say to the many friends of the INSTITUTE, that every effort has been made to make the business management of this great undertaking efficient, to the end that every penny so generously given may be wisely spent. We believe we have attained substantial success in accomplishing this.

The Superintendent and his staff and the employees have loyally carried us through a trying year. In many instances they have rendered service which they might well have considered beyond the call of duty. For this we are deeply grateful.

OBITUARY

We have lost from our number during the past year **William Henry Butterworth**, who died on November 24th. He had been a member of the Board of Managers from 1873, and a Lay Vice-President of the Society since 1908.

He was deeply interested in our work. His advice and wise counsels were always of great value and assistance. During recent years, ill health prevented continued active co-operation. Mr. Butterworth is remembered as a loyal and devoted friend of seamen.

The sudden death on March 1st of **Miss Marie Louise Bennett**, Private Secretary to the Superintendent of the Institute, stunned us all.

This record is made in remembrance of her life work of thoughtful self-sacrificing friendliness.

From December, 1910, to March, 1921, she rendered to this Society faithful, loyal, devoted and invaluable service.

GENERAL SUMMARY OF WORK

ALL STATIONS AND DEPARTMENTS, JANUARY 1, 1921, TO DECEMBER 31, 1921.
Submitted by the REV. ARCHIBALD R. MANSFIELD, D.D., Superintendent.

SEAMEN'S WAGES DEPARTMENT

Number of Deposits.....	5,036	Amount of Transmissions....	\$167,456.39
Amount of Deposits.....	\$744,869.34	Notary Signatures.....	700
Number of Transmissions....	1,330		

SHIPPING DEPARTMENT

Men signed	1,506	Total given employment.....	1,921
Men given temporary work...	415	Number of vessels supplied...	212

RESTAURANT, SODA FOUNTAIN, SLOP CHEST, TAILOR, LAUNDRY, LODGINGS, MAIL, BAGGAGE, WASH ROOM

Total meals served.....	533,405	Lodgings registered.....	264,711
Sales at Soda Fountain.....	477,605	Mail received	198,344
Sales at Slop Chest.....	13,443	Baggage received.....	47,532
Sales in Tailor Shop.....	1,929	Barber customers	17,612
Laundry customers	3,212	Wash room tickets	2,408

RELIGIOUS AND SOCIAL, INCLUDING RELIEF AND CLINIC

English services	154	Knitted and other useful articles distributed	2,974
Total attendance	17,442	Christmas gifts	504
Bible classes	44	Reading matter distributed...	5,747
Total attendance	4,091	Ships visited	406
Miscellaneous services	104	Home Hour	55
Attendance miscel. services...	6,971	Attendance	10,714
Communion services.....	47	Relief assisted through M. M. & B. Fund and other funds.	15,197
Communion services, hospital	10	Treated in Inst. Clinic.....	6,590
Baptisms	18	Referred to other societies...	278
Marriages	5	Sent to hospitals	949
Funerals	46	Visits to hospitals	593
Services at hospitals.....	79	Visits to patients.....	293,237
Total attendance	4,431		
Entertainments	180		
Total attendance	53,971		

NAVIGATION AND MARINE ENGINEERING AND RADIO SCHOOL

Students enrolled	309	Daily average attendance	25
First aid lectures	21	Questions and Answers sold.	526
Attendance first aid lectures	78	Catalogues and circulars sent.	3,975
Examined and passed Local Inspectors	212	Ships aided in transmitting radio messages	251
School certificates issued.....	10		

TREASURER'S ANNUAL STATEMENT

JANUARY 1, 1921 TO DECEMBER 31, 1921

INCOME

Revenue from Outside Sources:

Subscriptions and Donations	\$92,197.42
Church Offerings	2,342.24
Collections on Ships	1,087.75
Net Income from Invested Funds.....	9,389.99
	<u>\$105,017.40</u>

Revenue from Institute Activities:

Hotel (Including Lodgings, Barber Shop, Wash Room), Post Office, Baggage Room, Officers' Dining Room, Lunch Counter, Soda Fountain, Slop Chest and Shipping Departments, Navigation, Marine Engi- neering and Radio School	\$341,608.71	
North River Station.....	236.96	
Rent, British Consulate General Shipping Branch.....	1,872.00	
Miscellaneous	148.00	
* Revenue from Special Appeals.....	15,000.00	\$463,883.07

EXPENDITURES

Institute Building, 25 South Street:

Religious and Social Work	\$30,279.14	
Salaries of Superintendent and Staff, Wages of Employees in all other Departments; also supplies for Hotel, Dining Room, Lunch Counter, Engine Room, Slop Chest, Soda Fountain, Navigation, Marine Engi- neering and Radio School, etc.....	421,567.24	
"The Lookout"; Salaries, Printing and Postage.....	5,949.49	
Repairs and Replacement Fund.....	1,166.66	
North River Station: Salaries, Expenses and Repairs.....	10,188.85	\$469,151.38
		<u>\$5,268.31</u>
Deficit		

FRANK T. WARBURTON,
Treasurer.

CERTIFICATE OF AUDITORS

We have audited the above Income Account, and hereby certify that, in our opinion, it properly reflects the transactions of the year ended December 31, 1921.

MARWICK, MITCHELL & Co.

40 Exchange Place, New York,
April 25, 1922.

* Note: The sum of \$15,000.00 was raised by Special Appeal and was paid on account of the Floating Indebtedness existing December 31, 1920, otherwise the deficit would have been \$20,268.31.

CERTIFICATE OF AUDITORS

We have audited the accounts pertaining to the operating transactions of the Seamen's Church Institute of New York for the year ended December 31, 1921, and have prepared therefrom the foregoing statement of Income and Expenditure. All revenue recorded on the books has been duly deposited in the banks and satisfactory vouchers properly approved have been produced in support of the expenditures.

We hereby certify that the Balance Sheet as at December 31, 1921, and the accompanying Income and Expenditure Account are in accordance with the books and, in our opinion, show the true financial position of the Institute (exclusive of Endowment Funds and Investments in Buildings, Furniture, Etc.) as at December 31, 1921, and the results of its operation for the year ended on that date.

MARWICK, MITCHELL & Co.

40 Exchange Place, New York,
April 25, 1922.

COMMITTEE ON TRUST FUNDS

SUMMARY

ASSETS

Railroad securities, etc.		\$177,847.53
Real estate: 52 Market Street	\$10,000.00	
Front Street property	82,104.34	92,104.34
Cash on deposit:		
Emigrant Industrial Savings Bank	250.00	
N. Y. Life Insurance & Trust Co.	29,554.06	29,804.06
		<u>\$299,755.93</u>
PERMANENT FUND: Income to be applied to the general uses of the Society:		
Balance, last report	\$130,344.41	
Legacy, Lucie B. Carew	\$4,931.00	
Legacy, Jane Matilda Maxwell	500.00	
Legacy, Captain William James Barry, Sound Pilot, retired	500.00	5,931.00
WILLIAM WALDORF ASTOR TRUST FUND: Income to be applied first to the support of missionary at East River Station, and afterwards to the maintenance of any missionaries employed to the Society.		
Balance, last report	\$50,877.50	
Add Sinking Fund, transferred from income	58.50	50,936.00
CHARLES E. RHINELANDER FUND: In memory of his wife, Matilda F. Rhinelande. Income to be applied to the general uses of the Society		25,000.00
FREDERICK M. DEARBORNE MEMORIAL FUND: To constitute part of the Endowment Fund. Income to be applied to the general uses of the Society		22,524.40
FUNDS FOR SPECIAL PURPOSES		
DAVENPORT FUND: Income to be applied to the purchase of books for distribution among seamen		2,000.00
MORRILL FOUNDATION: In memoriam of the late Captain Charles Montgomery Morrill. Income to be applied exclusively to the relief of destitute mariners and those dependent upon them who may have been left destitute by their death while following the sea.		17,831.25
HOSIER MORGAN FUND: Income to be used in common with that of the Morrill Foundation Fund		1,735.27
EMILY H. BOURNE FUND: Income to be used in common with that of the Morrill Foundation Fund		5,000.00
SEAMEN'S RELIEF FUND: Income to be used in common with that of the Morrill Foundation Fund		751.95
"C. A. R." MEMORIAL FUND: Income to be used for some needy object		500.00
ROXY M. SMITH FUND: In memory of her husband, W. V. R. Smith. Income to be applied to giving annually an entertainment for seamen on the birthday of W. V. R. Smith, August 2nd		2,000.00
CAPT. WILLIAM WILSON OWEN MEMORIAL FUND: Income to be applied to the use of destitute sailors under the care of the Institute		250.00
CHAPEL FLOWER FUND: Income to be used for flowers for the altar of the Chapel.		
Balance, last report	\$1,167.88	
Additions to fund	158.99	
		<u>1,326.87</u>
Carried forward		<u>\$266,131.15</u>

Committee on Trust Funds (Continued)

Brought forward		\$266,131.15
RAMAGE ENDOWMENT: Income to be used for the maintenance of dependent seamen		3,000.00
BRITISH AMERICAN WAR RELIEF FUND: Income to be used to relieve distressed British seamen		2,000.00
ANNEX BUILDING FUND: To endow rooms in Annex when built.		
Balance, last report	\$3,200.00	
Additions, Gymnasium Fund	174.78	
Mr. George Zabriskie, in memory of our children, Helen, Romeyn and Reginald	250.00	3,624.78
GERARD BEEKMAN FUND: In memory of his brother, James William Beekman. Income to be used to pay for a lay reader and sailor's friend in the sailors reading room now dedicated to his brother		15,000.00
CHARLES E. POTTS FUND: Income to be used for the maintenance of the rooms in the building now or at any time hereafter maintained by the Institute known and designated as the Isabella Potts and Philip Ruprecht Room.		
Balance, last report	\$5,000.00	
Addition to fund	5,000.00	10,000.00
Total		<u>\$299,755.93</u>

INCOME

Received from Railroad Securities, etc.	\$7,458.79
Received from Mortgages	610.10
Received from Emigrant Industrial Savings Bank	10.10
Received from New York Life Insurance & Trust Co.	596.42
	<u>\$8,675.41</u>

Distributed as follows:

Permanent Fund	Paid Treasurer	\$1,678.32
Astor Fund	" "	2,283.18
Rhinelande Fund	" "	1,101.38
Dearborne Fund	" "	935.83
Davenport Fund	" "	88.62
Morrill Foundation Fund	" "	909.68
Morgan Fund	" "	75.32
Bourne Fund	" "	247.50
Seamen's Relief Fund	" "	13.29
Capt. Owen Fund	" "	10.00
Ramage Endowment Fund	" "	178.20
British American Relief Fund	" "	58.58
		<u>1,492.57</u>
Roxy M. Smith Fund	" "	88.62
Chapel Flower Fund	" "	30.94
Gerard Beekman Fund	" "	677.15
Potts Fund	" "	159.03
Astor Fund, transferred to Sinking Fund ...	" "	58.50
New York Life Insurance & Trust Co., commissions	" "	81.27
		<u>139.77</u>
Dated, New York, December 31st, 1921,		<u>\$8,675.41</u>

JOHN A. MCKIM,
ROBERT L. HARRISON,
JUNIUS S. MORGAN, JR.,
Committee on Trust Funds.

Securities examined and found to agree with the foregoing account.
ROBERT McC. MARSH,
LE ROY KING,
Auditing Committee.

Twenty First Annual Report of the SEAMEN'S BENEFIT SOCIETY

The Seamen's Benefit Society has completed twenty-one years of constant service for the men of the sea. Until this year, it has been the only organization of women, connected with the Seamen's Church Institute of New York, and it has come of age in devoted service.

Twenty-one years is a long time, to keep up enthusiasm and work, but never has this organization failed in its service of love. It has given of its time, its money, and its work, and the results cannot be set in cold type.

The Apprentice Room, a gift of this organization, and kept up by it, has been used almost constantly the past year for the Sunday evening teas, the Thursday evening parties, and many other social gatherings, as well as its constant service in providing a safe and wholesome reading, writing and game room, for the boys at all times. The room is never empty, at any hour of the day or evening, boys are there, taking advantage of its homey atmosphere.

But this organization is not satisfied to care for the boys alone, but reaches a long arm of service to the grown up boys, who need them almost as much. Some of the members attend the Sunday evening home hour, and make it a real joy to the men, who are hungry for the atmosphere created by good women. To the men who are at that service, their presence turns their thoughts back to their own distant homes, and they are eager to tell of their wives and children and sweethearts.

This organization has a Lenten Sewing Class that makes such household things as the Institute may need at the time. It sends treats for the men from time to time, such as tickets for the theatre and money for picnics or automobile trips. Another and very important phase of its work is providing literature for the men and boys. This organization sends great quantities of books and magazines, and many a seaman, bending under the weight of his seabag on one side, is partly balanced by a great package of books and magazines on the other.

Flowers are also frequently sent by members for the Altar of the Church of Our Saviour.

The Seamen's Benefit Society has for twenty-one years proven its value, and it is anxious to have the co-operation of all women, who may be interested in the welfare of the men of the sea.

TREASURER'S REPORT

Due to the serious illness of the treasurer it has not been possible to have a financial report prepared for this publication.

AUGUSTA M. de PEYSTER, *Secretary.*



Apprentice Boys' Room—Given by the Seamen's Benefit Society

SEAMEN'S BENEFIT SOCIETY

Officers

MISS CATHERINE S. LEVERICH, *President* MRS. H. VAN C. LUNG, *Treasurer*
 MISS AUGUSTA M. DE PEYSTER, *Secretary*

Active Members

MRS. H. GLOSTER ARMSTRONG,	MRS. VERNON MANN
MRS. WALTER P. ANDERTON	MRS. FRANK B. PORTER, JR.
MISS JOSEPHINE BEEKMAN	MRS. JOSEPH F. SIMMONS
MISS FRANCES DE PEYSTER	MRS. HENRY C. SWORDS
MISS ISABEL GREGORY	MRS. CHARLES F. SWAN
MRS. RYDER HENRY	MISS EMILY VAN AMRINGE
MISS MARGARET D. LEVERICH	MISS MARY WAGSTAFF
MRS. HOWARD T. MARTIN	MISS ETHEL ZABRISKIE

*MRS. ARTHUR M. HUNTER

Associate Members

MR. H. F. ALEXANDER	MRS. ROBERT HOE	MRS. EUGENE POOL
MRS. BENJAMIN H. ADAMS	MRS. FREDERICK T. HOPPIN	MRS. ALBERT E. PUTNAM
MRS. RICHARD BABBAGE	MISS SARAH L. HORN	MRS. WILLIAM M. PURDY
MISS LOUISE H. BARNARD	MRS. E. DE P. HOSMER	MRS. CHARLES E. ORVIS
MRS. CHARLES B. BARKLEY	MRS. FRANK LONDON HUMPHREYS	MRS. FRANKLIN D. ROOSEVELT
MRS. EDMUND L. BAYLIES	MISS MARGARET A. JACKSON	MRS. JAMES R. ROOSEVELT
MRS. EDWARD N. BREITUNG	MISS LUCY H. KEAN	MRS. W. EMLÉN ROOSEVELT
MRS. J. J. BLODGETT	MRS. RUTHERFORD KEARNEY	MRS. HENRY G. SANFORD
MR. ALEXANDER JAY BRUEN	MRS. DAVID B. KING	MRS. HERBERT L. SATTERLEE
MRS. ANDREW CARNEGIE	MISS CORNELIA KERBY	MISS DOROTHY SCHIEFFELIN
MRS. GEORGE L. CHENEY	MRS. WOODBURY G. LANGDON	MRS. MORTON L. SCHWARTZ
MISS ANNIE CLARKSON	MRS. JOSEPH T. LOW	MRS. HENRY F. SHOEMAKER
MRS. FRANCIS COLT	MRS. SETH LOW	MRS. HENRY W. SHOEMAKER
MRS. ARTHUR COPPELL	MRS. WILLIAM G. LOW	MRS. EDWARD B. SEXTON
MRS. C. VANDERBILT CROSS	MRS. LEA MCL. LUQUER	MRS. EDWARD SPARROW
MRS. H. CHAUNCEY CRYDER	MRS. JAMES MACDONALD	MRS. MALCOLM STUART
MRS. B. FARQUAR CURTIS	MRS. LEROY MCKIM	MISS ANNE STUYVESANT
MRS. JAMES MAY DUANE	MRS. CHARLES M. MACNEILL	MRS. J. TODHUNTER THOMPSON
MISS KATHARINE DUBOIS	MRS. JAMES B. MABON	MISS EDYTH J. TURNER
MRS. JOHN R. DELAFIELD	MRS. ALFRED T. MAHAN	MISS ELIZABETH M. VAN WINKLE
MISS LAURA DUDLEY	MRS. EDWARD P. MEANY	MRS. JAMES B. VAN WOERT
MRS. WM. MCK. DUNN	MRS. JOHN MEYERKORT	MRS. PATRICK A. VALENTINE
MRS. HAMILTON FISH	*MRS. ABERCROMBIE MILLER	MISS JULIA CHESTER WELLS
MRS. ERNEST FLAGG	MISS ADELINA MOLLER	MRS. LAWRENCE WELLS
MRS. ANSON R. FLOWER	MRS. HENRY LEWIS MORRIS	MISS EDITH WETMORE
MISS CORNELIA GALLATIN	MRS. NEWBOLD MORRIS	MISS CAROLINE WHITE
MRS. ELBERT H. GARY	MRS. J. I. MOUNT	MISS MAY W. WHITE
MRS. J. J. GOODWIN	MRS. WM. A. NETTLETON	MRS. MALCOLM WILSON
MISS FANNY GREGORY	MISS EMILY NORRIE	MISS CAROLINE M. YOUNG
MRS. ANSON W. HARD, JR.	MRS. ALFRED DUANE PELL	

Sustaining Members

MISS EMILY BUCH	MRS. EDWARD H. PEASLEE	MRS. GEORGE A. ROBBINS
MRS. HENRY COLEMAN DRAYTON	MRS. WILLIAM WILLIS REESE	MRS. SAMUEL THORNE
MRS. CLEVELAND H. DODGE	MRS. JOHN S. ROGERS	MR. W. A. THOMPSON, JR.

Honorary Members

RT. REV. WILLIAM T. MANNING, D.D., D.C.L., Bishop of New York
 H. GLOSTER ARMSTRONG, H. B. M., Consul General of Great Britain
 D. J. STEYN PARVE, Consul General, The Netherlands
 T. F. BERNARDI, Royal Consul General, Italy
 HANS FAY, Consul General, Norway

*Deceased.

LEGACIES TO THE INSTITUTE

The Institute has been greatly aided by this form of generosity. No precise words are necessary to a valid legacy to the corporation. The following clause, however, may be suggested:

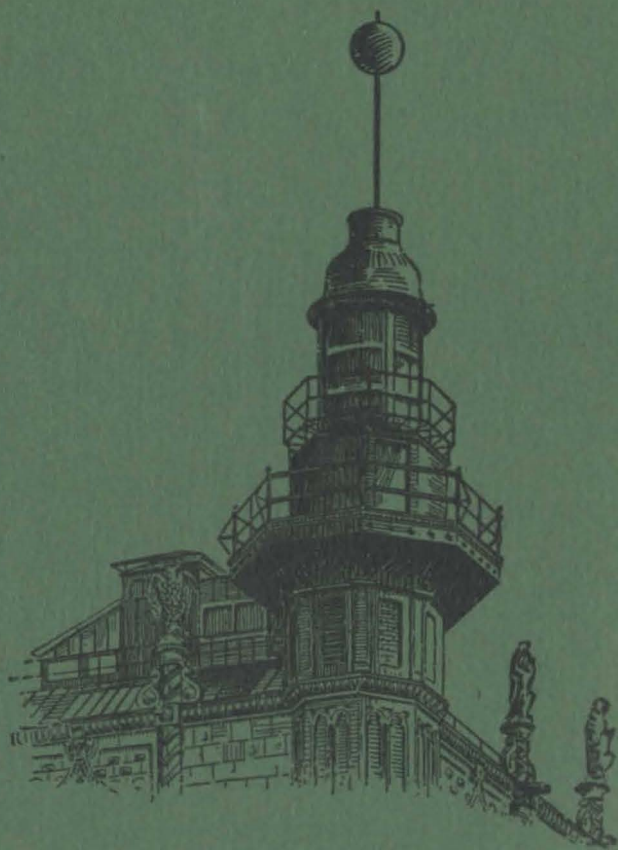
FORM OF BEQUEST

I give and bequeath to the "Seamen's Church Institute of New York," a corporation incorporated under the Laws of the State of New York, the sum of

..... Dollars to be used by it for its corporate purposes.

If land or any specific personal property such as bonds, stocks, etc., is given, a brief description of the property should be inserted instead of the words "the sum of"

..... Dollars."



TITANIC MEMORIAL LIGHTHOUSE TOWER

Time Ball drops daily, exact noon. *Green Light* burns nightly.
Three Cooper Hewitt Quartz lamps, each 2,500 candle power.